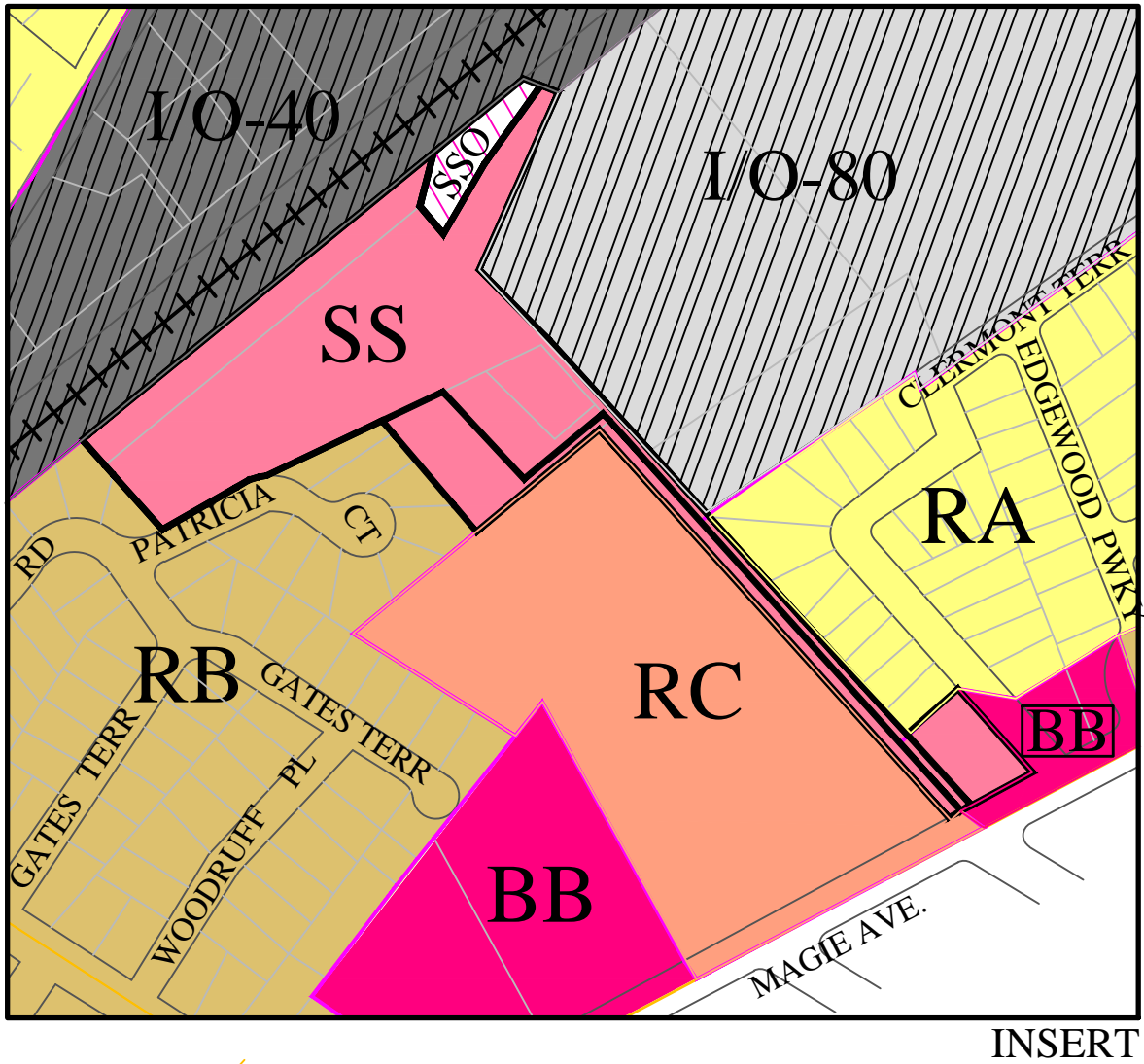
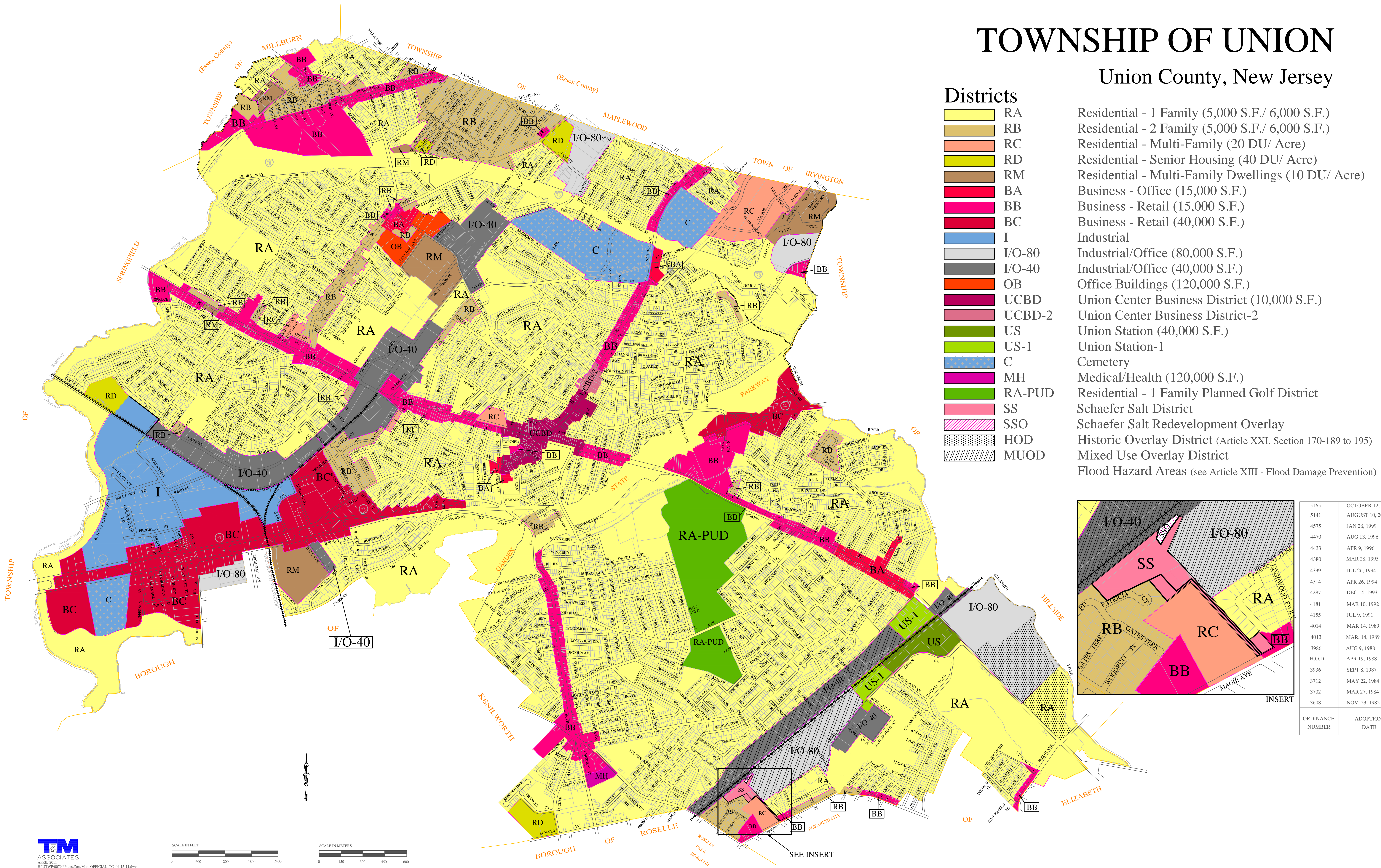


TOWNSHIP OF UNION

Union County, New Jersey

Districts

- RA Residential - 1 Family (5,000 S.F./ 6,000 S.F.)
- RB Residential - 2 Family (5,000 S.F./ 6,000 S.F.)
- RC Residential - Multi-Family (20 DU/ Acre)
- RD Residential - Senior Housing (40 DU/ Acre)
- RM Residential - Multi-Family Dwellings (10 DU/ Acre)
- BA Business - Office (15,000 S.F.)
- BB Business - Retail (15,000 S.F.)
- BC Business - Retail (40,000 S.F.)
- I Industrial
- I/O-80 Industrial/Office (80,000 S.F.)
- I/O-40 Industrial/Office (40,000 S.F.)
- OB Office Buildings (120,000 S.F.)
- UCBD Union Center Business District (10,000 S.F.)
- UCBD-2 Union Center Business District-2
- US Union Station (40,000 S.F.)
- US-1 Union Station-1
- C Cemetery
- MH Medical/Health (120,000 S.F.)
- RA-PUD Residential - 1 Family Planned Golf District
- SS Schaefer Salt District
- SSO Schaefer Salt Redevelopment Overlay
- HOD Historic Overlay District (Article XXI, Section 170-189 to 195)
- MUOD Mixed Use Overlay District
- Flood Hazard Areas (see Article XIII - Flood Damage Prevention)



5165	OCTOBER 12, 2010
5141	AUGUST 10, 2010
4575	JAN 26, 1999
4470	AUG 13, 1996
4433	APR 9, 1996
4380	MAR 28, 1995
4339	JUL 26, 1994
4314	APR 26, 1994
4287	DEC 14, 1993
4181	MAR 10, 1992
4155	JUL 9, 1991
4014	MAR 14, 1989
4013	MAR 14, 1989
3986	AUG 9, 1988
H.O.D.	APR 19, 1988
3936	SEPT 8, 1987
3712	MAY 22, 1984
3702	MAR 27, 1984
3608	NOV. 23, 1982

ORDINANCE NUMBER	ADOPTION DATE
------------------	---------------



ZONING MAP